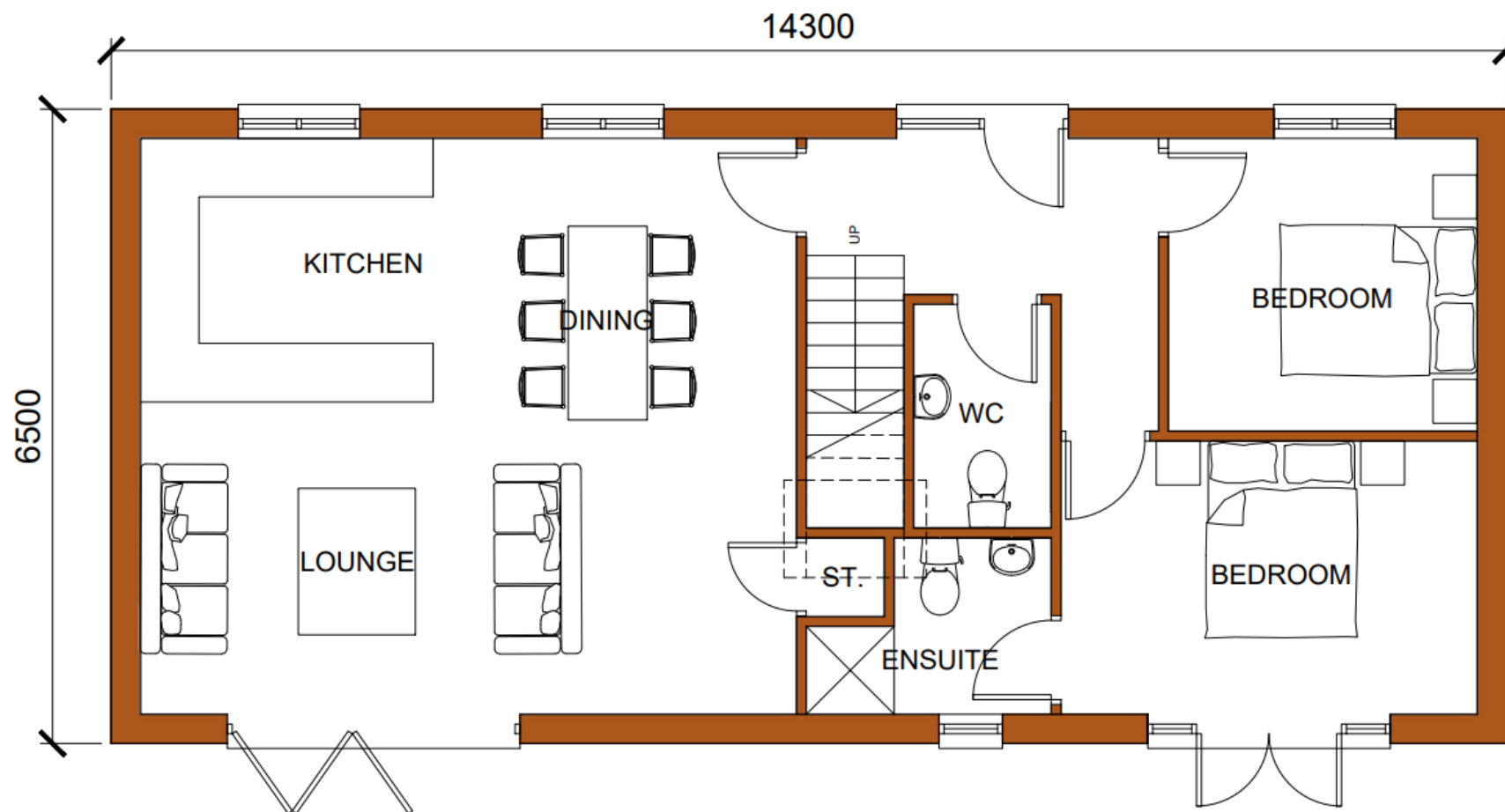


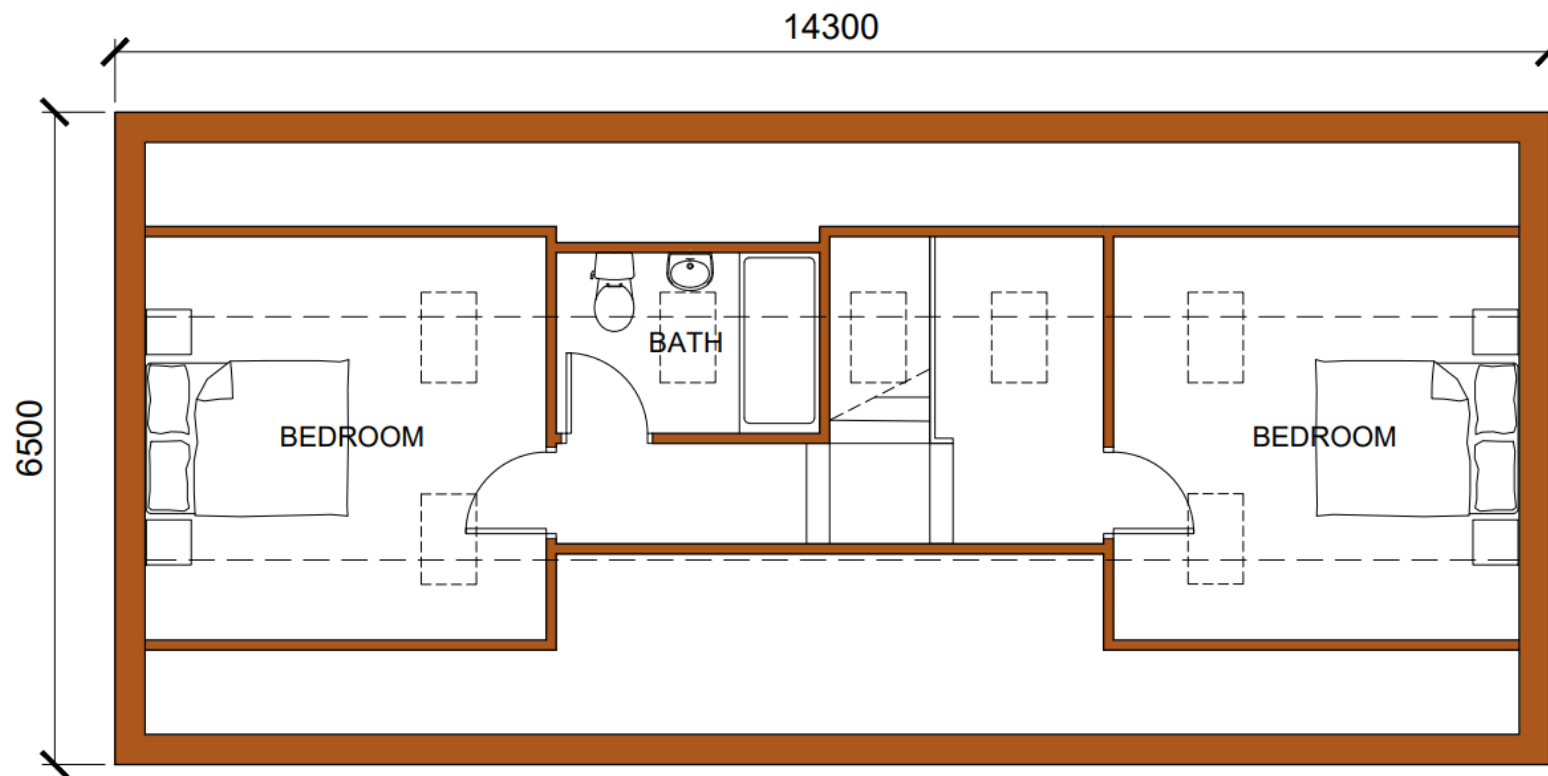
Revised Drawings





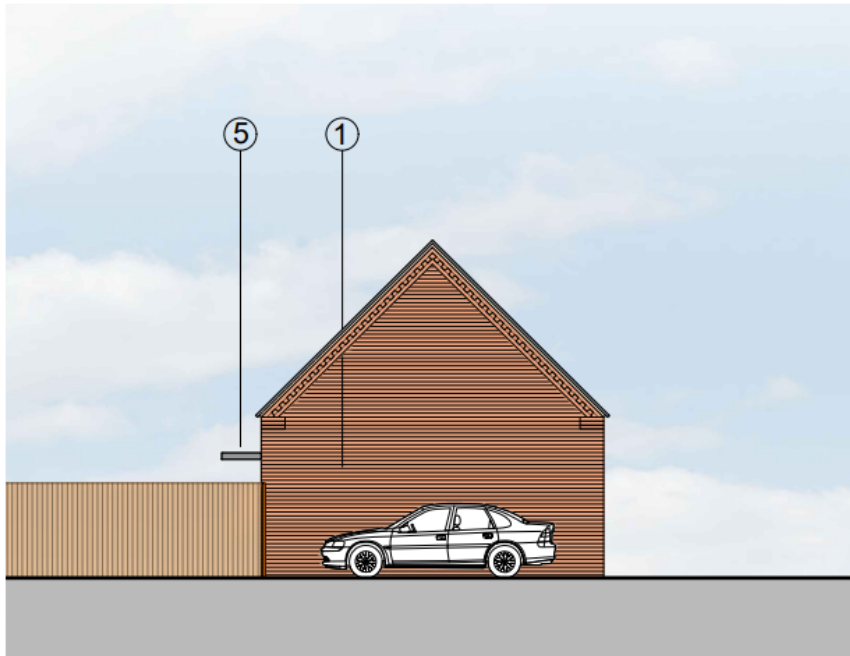


GROUND FLOOR PLAN
(1:50)

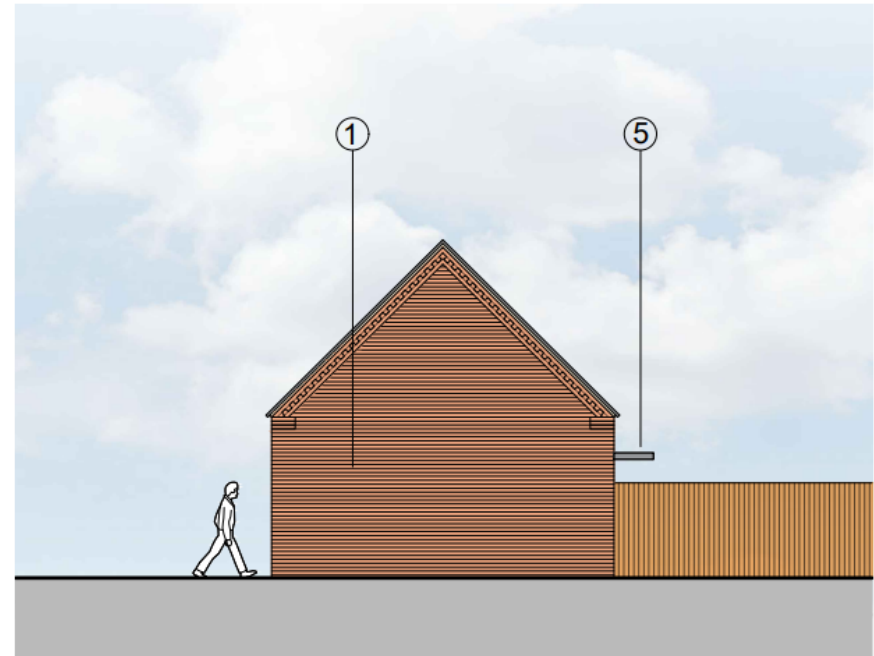


FIRST FLOOR PLAN
(1:50)

1. /
2. /



EAST (SIDE) ELEVATION
(1:100)



WEST (SIDE) ELEVATION
(1:100)



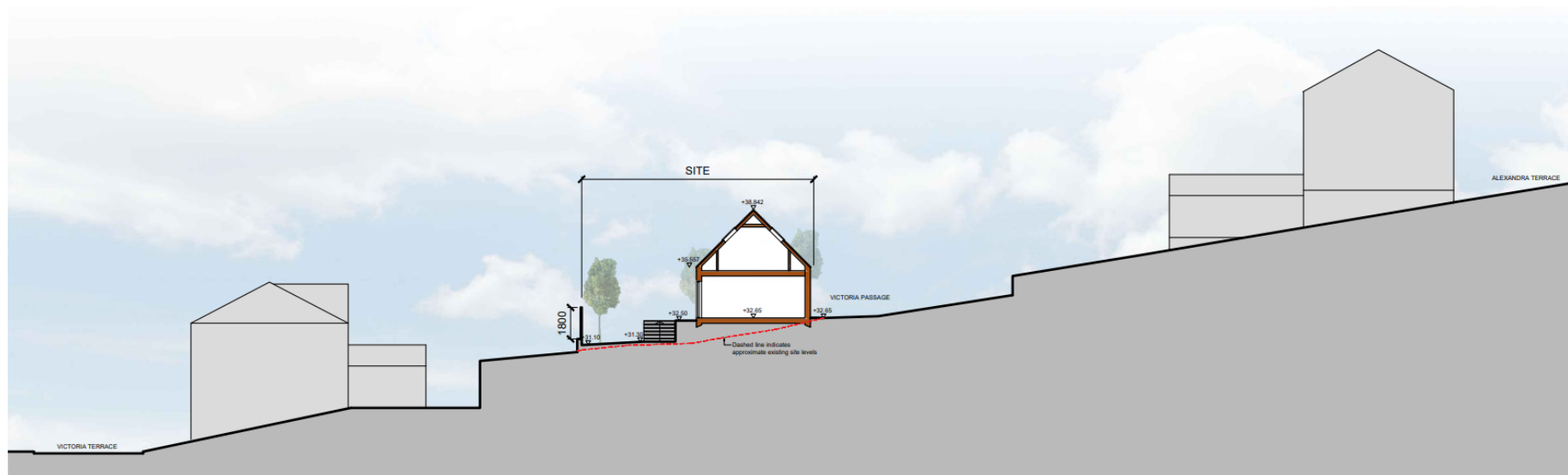
NORTH (FRONT) ELEVATION

(1:100)

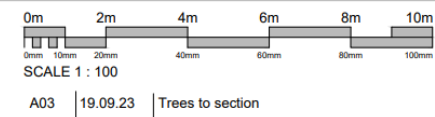


SOUTH (REAR) ELEVATION

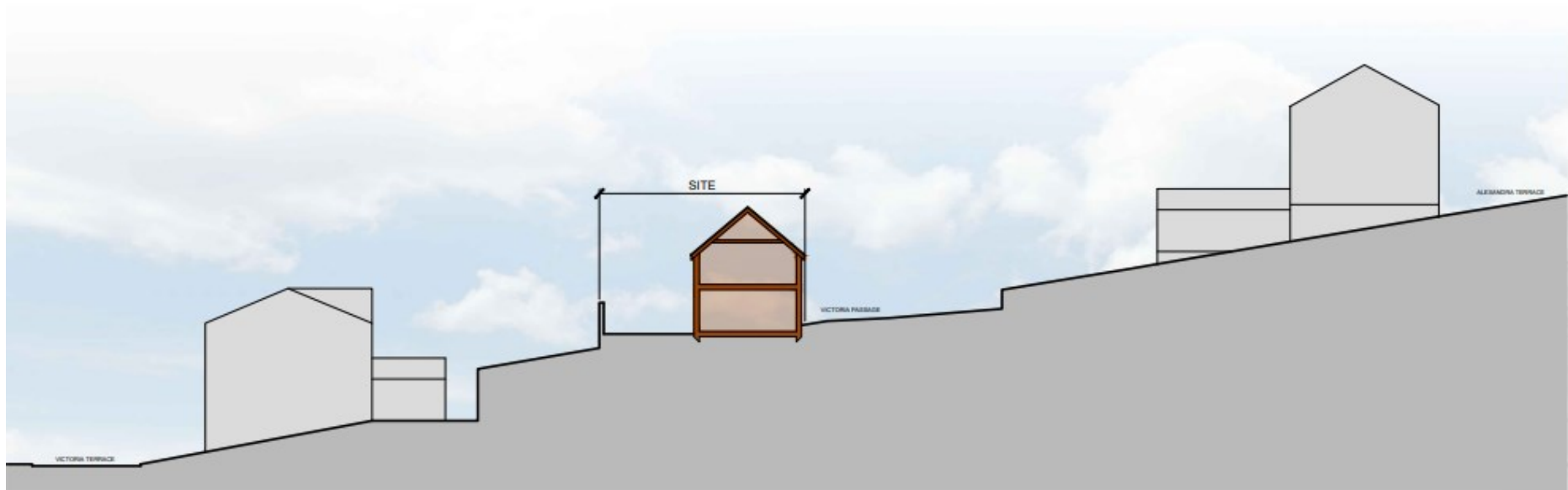
(1:100)



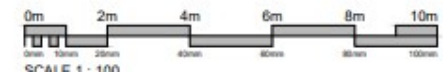
GENERIC SITE SECTION
(1:200)

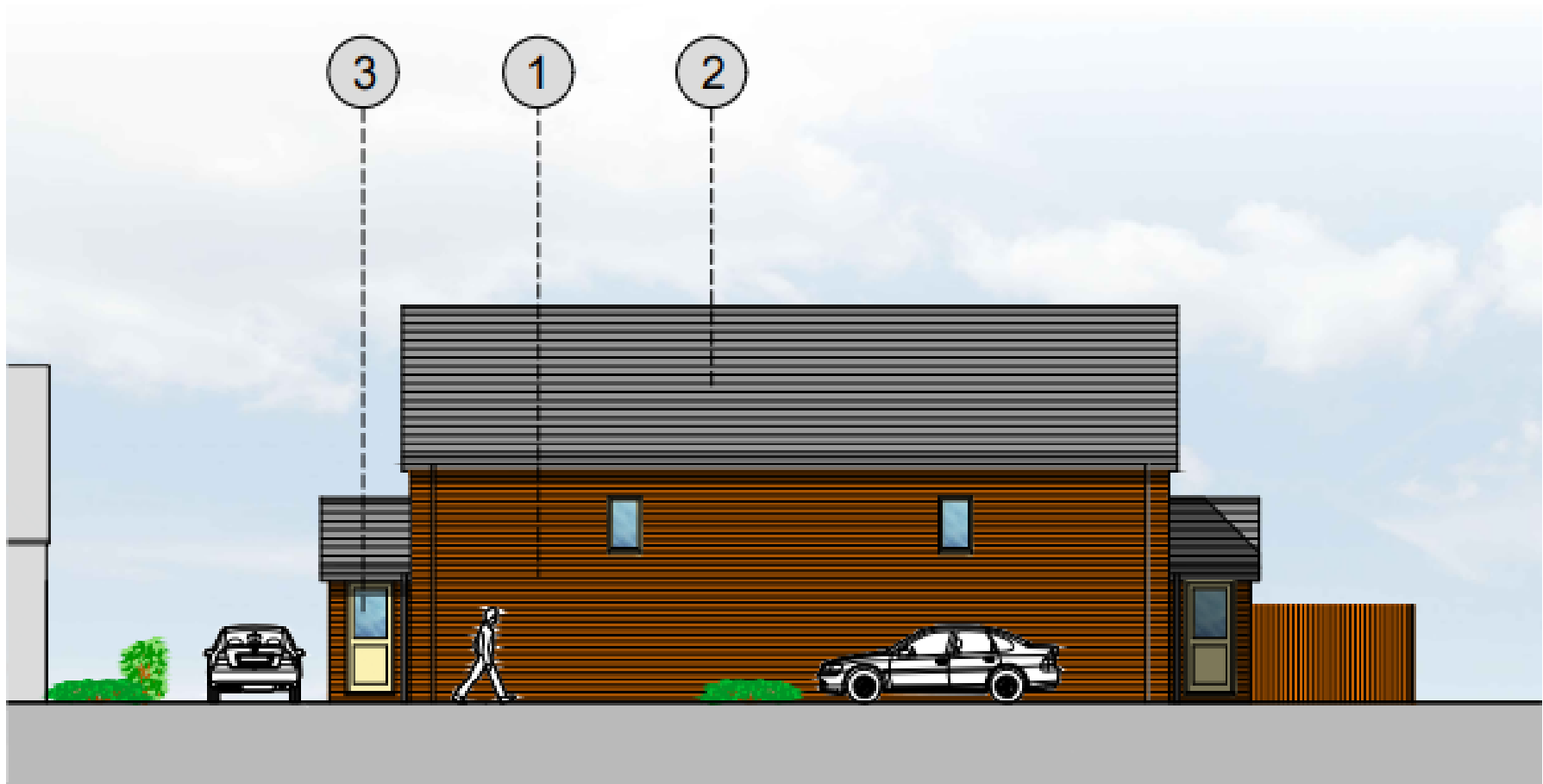


Previous Drawings



SITE SECTION
1:200

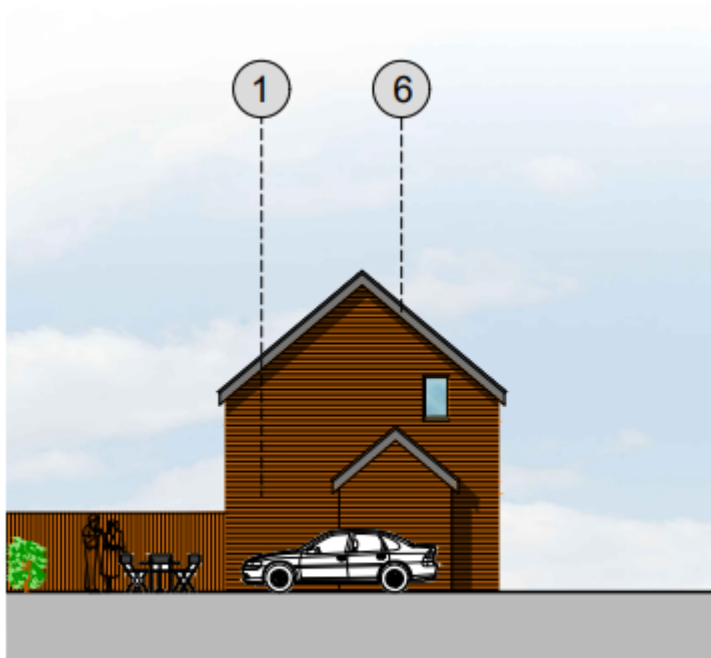




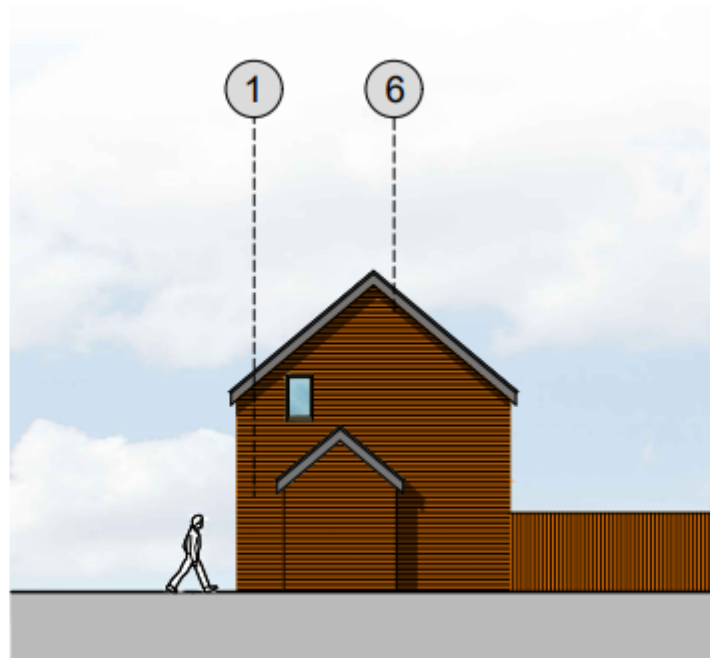
NORTH (FRONT) ELEVATION



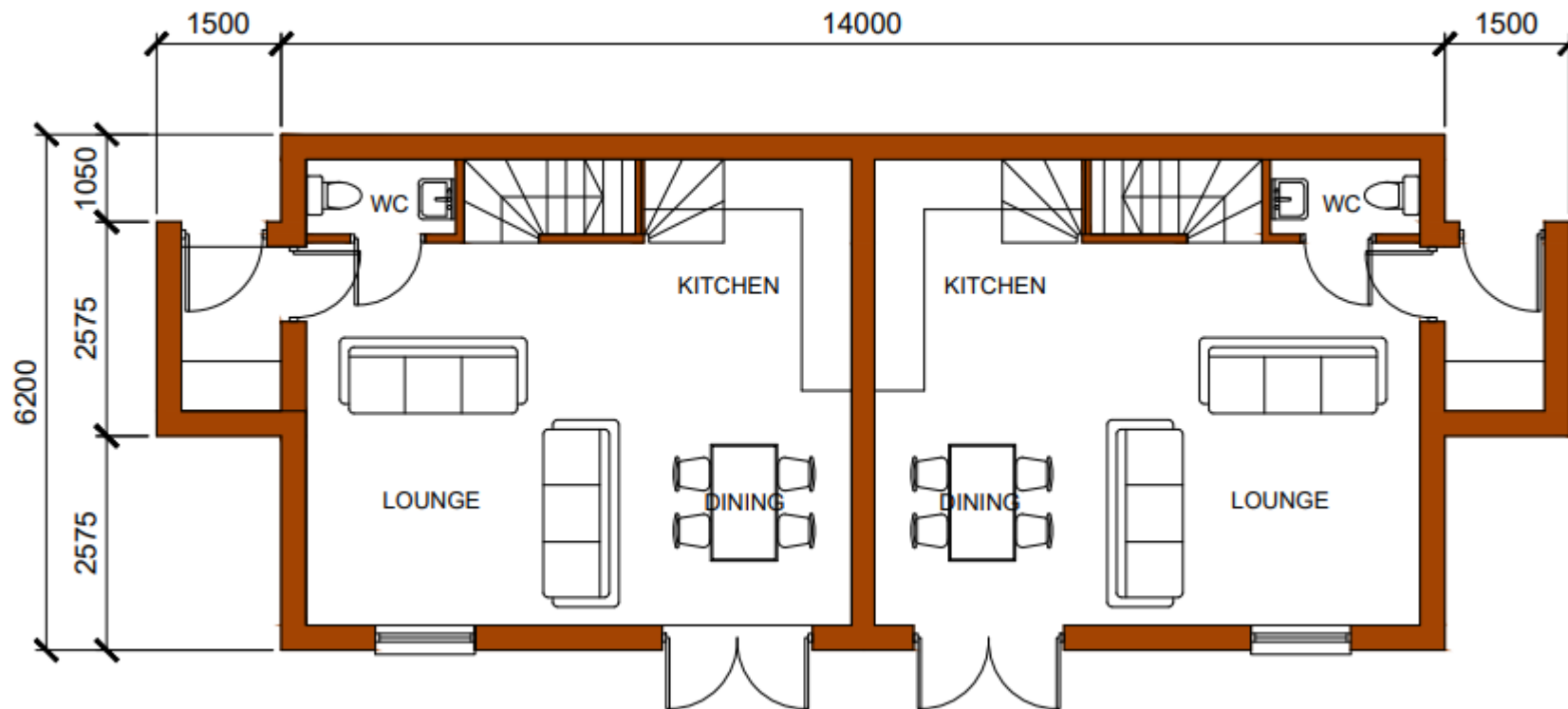
SOUTH (REAR) ELEVATION



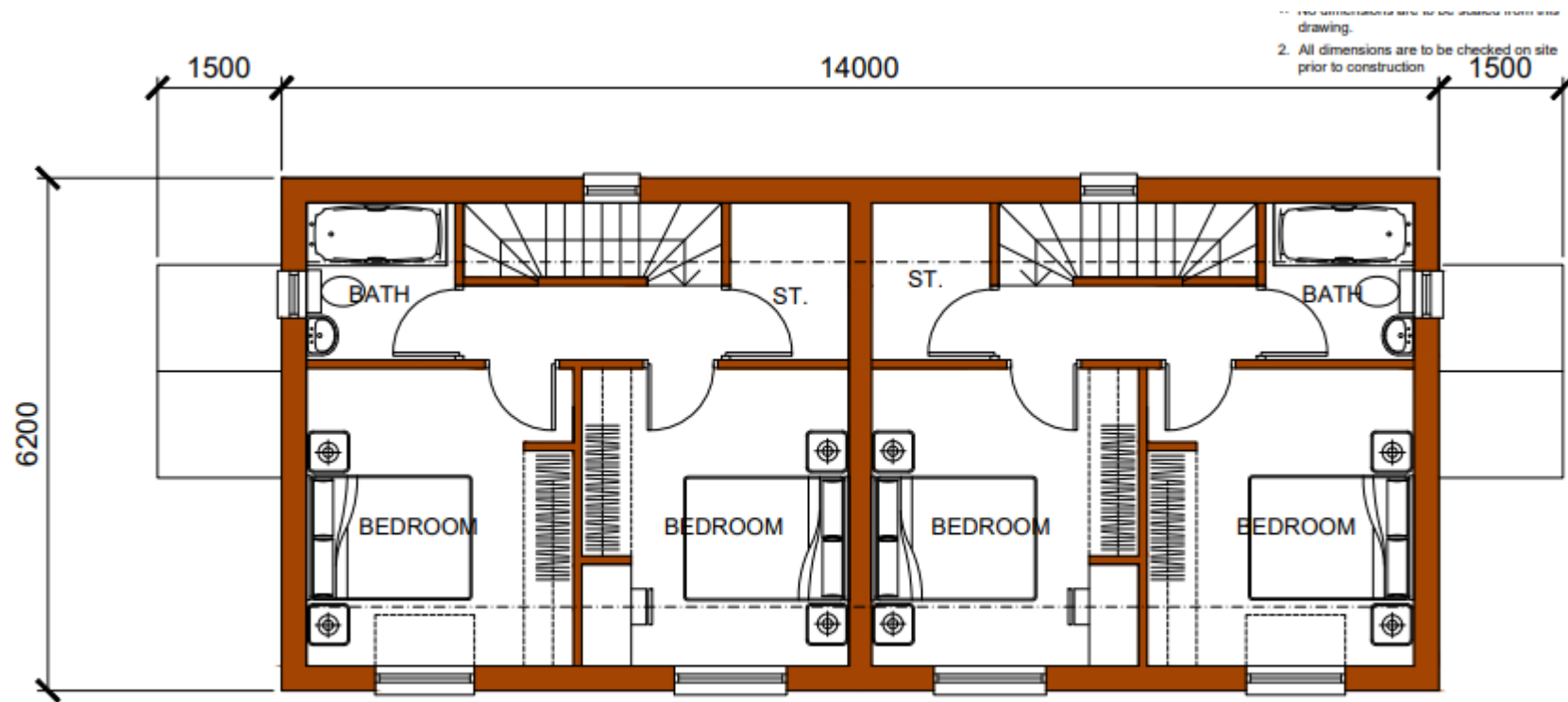
EAST (SIDE) ELEVATION



WEST (SIDE) ELEVATION



GROUND FLOOR PLAN



FIRST FLOOR PLAN



View from Victoria Street of the entrance to Victoria Passage



Victoria Passage



V

Victoria Passage



Victoria Passage with The Stable Block and Victoria Cottage



View from the rear of Victoria Cottage



Victoria Passage with the site on the left



Rear of Alexandra Terrace





Victoria Passage with the site on the right



The site





Entrance to Victoria Passage from Alexandra terrace





Victoria Passage



Victoria Passage



Victoria Passage



Victoria Passage